

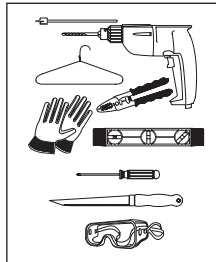
INTRODUCTION

Thank you for purchasing Moderno speakers. When properly installed your new speakers will give you years of entertainment pleasure. This manual will teach you about your new speakers and will show you how to install and get the very best performance from them. Please read it thoroughly.

TOOLS NEEDED

You will need the following tools to install your Moderno speakers:

- Pencil
- Keyhole or drywall saw
- Philips screwdriver
- Small level
- Fish tape or coat hanger
- Wire strippers
- Gloves
- Safety goggles
- Drill with 1/4" - 1/2" bit (for test hole) and 1" Flat bit (if drilling through studs)



BOX CONTENTS

Your Moderno speaker box should contain the following items:

- (1) Moderno M6R SST speaker
- (1) Paintable grille
- (1) Mounting cutout template (in packaging)

SPEAKER PLACEMENT

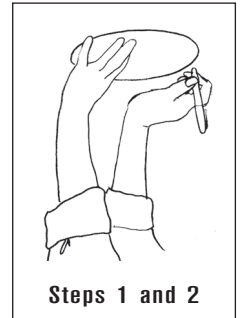
Moderno M6R SST Single Stereo Technology® speakers are ideal for use in hallways, bathrooms, closets, or in any location where listeners will be moving around or where a pair of stereo speakers would be impractical. Because a single M6R SST speaker reproduces both stereo channels from a single location, it will deliver outstanding audio performance from an extremely wide variety of mounting locations and can be mounted in either a wall or a ceiling.

Moderno M6R SST speakers have very smooth and predictable off-axis response, so they provide excellent coverage in distributed audio systems from a wide variety of installation locations. The chart below shows how far apart the speakers can be placed at different ceiling heights while still providing good coverage for all listeners. The distances are based on ear heights of 62" for standing listeners and 40" for seated listeners.

SPEAKER SPACING (IN FEET) FOR A DISTRIBUTED AUDIO SYSTEM		
	STANDING LISTENER	SEATED LISTENER
8-FOOT CEILING	5.7' Apart	9.5' Apart
10-FOOT CEILING	9.7' Apart	13.5' Apart
12-FOOT CEILING	13.7' Apart	17.5' Apart
14-FOOT CEILING	17.7' Apart	21.5' Apart

INSTALLING THE SPEAKERS

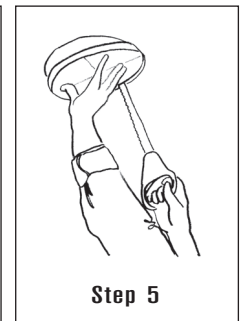
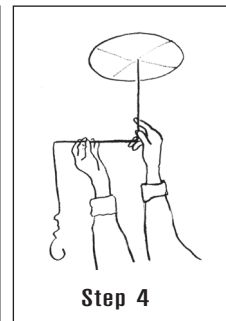
- Step 1.** Determine the location for the speaker (see *Speaker Placement* on page 1). Center the speaker between the wall studs or ceiling joists. Tap the wall or ceiling and listen for a "hollow" sound, or use a stud finder to locate studs.
- Step 2.** Position the included cutout template where the speaker is to be located and trace the outline on the wall or ceiling with a pencil.
 - Make sure the speakers are even with each other and level.



IMPORTANT: The edges of the cutout outline must be at least 3/4" away from any studs, to allow room for the RotoLock® clamps to operate.

NOTE: READ STEP 6 ABOUT RUNNING SPEAKER WIRE BEFORE DECIDING ON THE FINAL SPEAKER LOCATIONS.

- Step 3.** Drill a small hole in the center of the outline you just traced.
- Step 4.** Insert a coat hanger wire into the hole to feel-around for possible obstructions. If there are obstructions, patch the hole and select another location for the speaker. Make sure that any studs will be at least 3/4" away from the edges of the cutout.
- Step 5.** Carefully cut the outline of the mounting hole using a keyhole or drywall saw. Remove the drywall from the cutout.

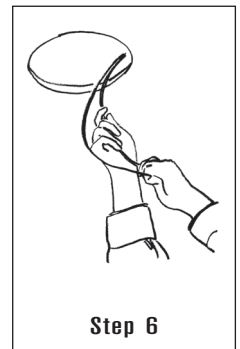


IMPORTANT: Make sure your amplifier's power is turned off before performing Step 6.

- Step 6.** Run the speaker cable from the speaker outputs of your amplifier to the speaker locations. Use high-quality cable such as HomeTech HTC100 16/4 cable. Pull the cables through the mounting holes you cut in the wall.

- Allow a few extra feet of cable, and leave enough cable slack so you can strip the insulation from the conductors when you're ready to connect to the speakers.

NOTE: IF SPEAKER CABLE IS TO BE RUN THROUGH WALLS OR CEILINGS, THE CABLE MUST BE UL- AND CL-RATED FOR YOUR SAFETY AND BUILDING CODE COMPLIANCE.

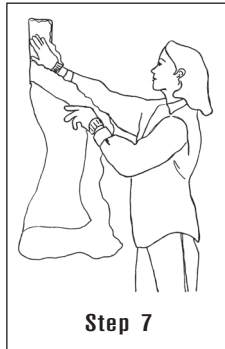


CONTINUED ON PAGE 2

MODERNO M6R SST SINGLE-STEREO TECHNOLOGY® SPEAKER

CONTINUED FROM PAGE 1

Step 7. Speaker performance can be enhanced by insulating the wall or ceiling cavity with fiberglass insulation. When insulating speakers, it is best to use a sheet of unfaced fiberglass insulation behind and around the sides of the speaker.



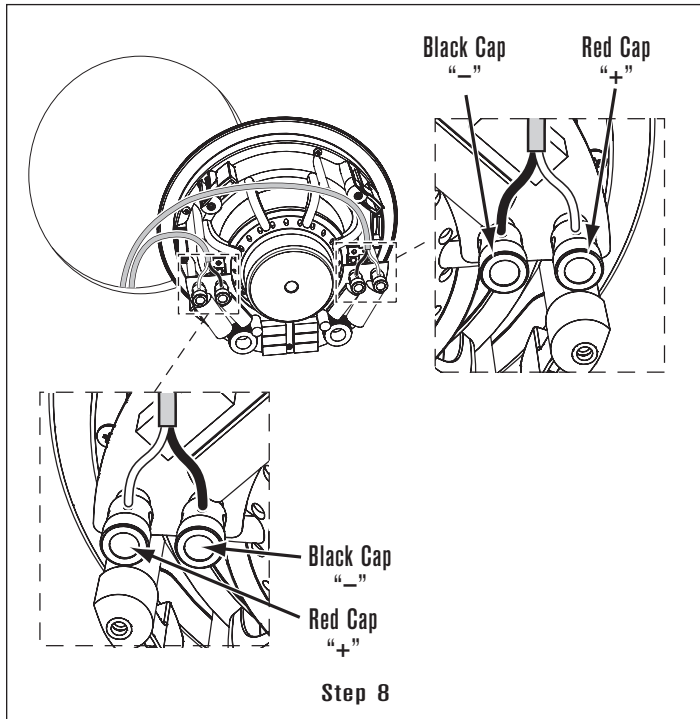
Step 7

Step 8. Connect the positive (“+”) wires from both amplifier channels to the speaker’s red terminals. Connect the negative (“-”) wires from both amplifier channels to the speaker’s black terminals.

- The speaker’s connector posts are spring-loaded. Push the top of each connector post down to open the connector and insert the exposed wires into the holes in the posts.

IMPORTANT: Be sure not to let any stray ‘+’ and ‘-’ wires touch each other. Touching wires can cause a short-circuit that could damage your amplifier.

- Double-check that you connected amplifier “+” to speaker “+” and amplifier “-” to speaker “-”.

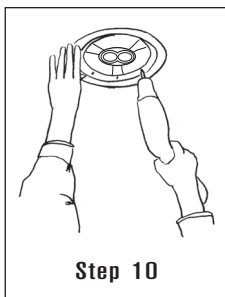


Step 8

Step 9. Make sure all the RotoLock clamps are in the full clockwise position so that they are tucked within the mounting hole’s border. Insert the speaker into the mounting hole.

Step 10. Tighten the four screws on the front of the speaker baffle evenly until the speaker is seated snugly and evenly against the wall or ceiling.

IMPORTANT: If you are using a drill or electric screwdriver to tighten the screws be sure use the lowest torque setting.



Step 10

Step 11. Install the grilles by placing them into the speaker baffles. Powerful magnets on the grilles and on the speaker baffles will hold the grilles firmly on the speakers.



Step 11

PAINTING THE GRILLES

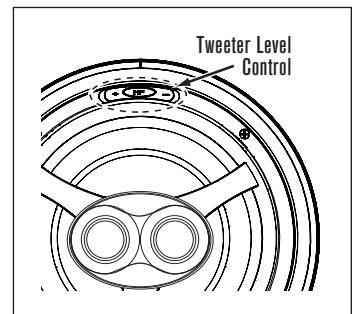
Moderno grilles may be painted to color-match their surroundings.

1. Remove the grilles from the speakers.
2. Remove the scrim cloth that is attached to the backs of the grilles. (The adhesive that holds the cloth in place is reusable.)
3. Paint the grilles with very thin paint (5 parts thinner to 1 part paint), being careful not to plug the holes.
4. When the paint has fully dried, re-attach the scrim cloths to the backs of the grilles.
5. Re-install the grilles on the speakers.

ADJUSTMENTS

Tweeter Level Control

The Moderno M6R SST speaker has a tweeter level control switch that lets you boost or cut the tweeter level by 3dB. This allows you to adjust the speaker’s brightness to better match your listening room or personal taste.



Once you have installed the speakers, listen to a variety of music that you are familiar with. If the music all tends to sound too bright or dull, use the Tweeter Level Control to compensate. If some recordings sound dull and some sound bright the speaker is accurately reproducing differences in the recordings, and you should leave the control in the middle (0dB) position.

SPECIFICATIONS

M6R SST

Tweeter:	Two 1" (25mm) Silk domes
Woofer:	6½" (133mm) Woven glass fiber cone, rubber surround
Frequency Response:	45Hz – 20kHz ±3dB
Impedance:	8 Ohms nominal
Power Handling:	100 Watts maximum
Sensitivity:	92dB SPL (2.83V 1 meter)
Grille Material:	Perforated metal
Adjustments:	±3dB Tweeter Level
Dimensions (Dia x D):	9" x 3¾" (229mm x 95mm)
Cutout Dim. (Dia):	8⅛" (206mm)
Shipping Weight:	4 lbs. (3.2kg) Each

TECHNICAL ASSISTANCE

For answers to installation questions or an installation walk-through, please call our Technical Assistance Department on any business day at: (800) 582-7777, from 7am to 5pm, Pacific Time.

OBTAINING SERVICE

If this product should need repair or service, contact your Authorized Moderno Dealer for help, or use the following procedure:

1. Prior to calling, note the product's model number, serial number, purchase date, and the name and address of the dealer where you purchased the product.
2. Contact our Technical Assistance Department at the above number and describe the problem the unit is experiencing. If applicable, they will issue a Return Authorization Number.

IMPORTANT: Do not return the unit to Moderno without first obtaining a Return Authorization Number!

3. If you're directed to return the unit to Moderno for repair, pack the unit in its original shipping carton. If needed, you can obtain replacement packaging from us for a small charge. Note: it is best if you place the box into an additional outer "overcarton" before shipment to minimize a chance of theft in shipment. Please include a copy of the original bill of sale inside the package.
4. Contact a package delivery service such as United Parcel Service or Federal Express to arrange prepaid (not collect) shipping. *Do not use the U.S. Postal Service.*

IMPORTANT: Freight collect shipments will be refused.

5. **Write the Return Authorization Number on the outside of the shipping carton.** For warranty work, please include a copy of the original bill of sale inside the package.
6. Ship the packaged unit to:

**Returns Department
Moderno
212 Avenida Fabricante
San Clemente, CA 92672-7531**

WARRANTY COVERAGE (USA ONLY)

If within five (5) years from the date shown on the bill of sale the product fails due to a defect in workmanship or material, Dana Innovations will, at its option and at no charge, repair or replace the components of the product which prove to be defective.

For this warranty to be effective, the bill of sale must show that the product was purchased from an "Authorized Moderno Dealer". This warranty shall apply exclusively to the original purchaser and shall not apply to products purchased for industrial or commercial use.

Furthermore, this warranty shall not apply if:

1. Damage to the unit was caused by accident, abuse or misuse;
2. The unit was opened, modified, or repaired by unauthorized personnel; or
3. The unit was not used as outlined in the instruction manual.

EXCLUSIONS AND LIMITATIONS

The warranty set forth above is in lieu of all other warranties, express or implied, of merchantability, fitness for a particular purpose, or otherwise. The warranty is limited to Dana Innovations products registered herein and specifically excludes any damage to loudspeakers and other allied or associated equipment which may result for any reason from use with this product.

Dana Innovations shall, in no event, be liable for incidental or consequential damages arising from any breach of this warranty or otherwise. This warranty gives you specific legal rights, and you may have rights which vary from state to state.



©2007 Moderno. All rights reserved. Moderno, Single-Stereo Technology and RotoLock are registered trademarks of Dana Innovations.

Due to continuous product improvement, all features and specifications are subject to change without notice.

For the latest Moderno product specification information visit our website: www.modernoaudio.com

MODERNO • 212 Avenida Fabricante • San Clemente, CA 92672-7531 USA • (800) 582-7777

www.modernoaudio.com