

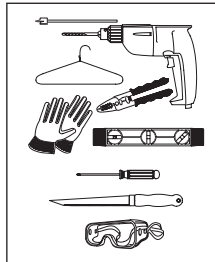
### INTRODUCTION

Thank you for purchasing a Moderno subwoofer. When properly installed your new subwoofer will give you years of entertainment pleasure. This manual will teach you about your new subwoofer and will show you how to install and get the very best performance from it. Please read it thoroughly.

### TOOLS NEEDED

You will need the following tools to install your Moderno subwoofer:

- Pencil
- Keyhole or drywall saw
- Philips screwdriver
- Small level
- Fish tape or coat hanger
- Wire strippers
- Gloves
- Safety goggles
- Drill with 1/4" - 1/2" bit (for test hole) and 1" Flat bit (if drilling through studs)



### BOX CONTENTS

Your Moderno subwoofer box should contain the following items:

- (1) Moderno M10 Sub Subwoofer
- (1) Paintable grille
- (1) Mounting cutout template (in packaging)

### SUBWOOFER PLACEMENT

The Moderno M10 Sub is designed to be installed into walls built with standard 2" x 4" stud construction.

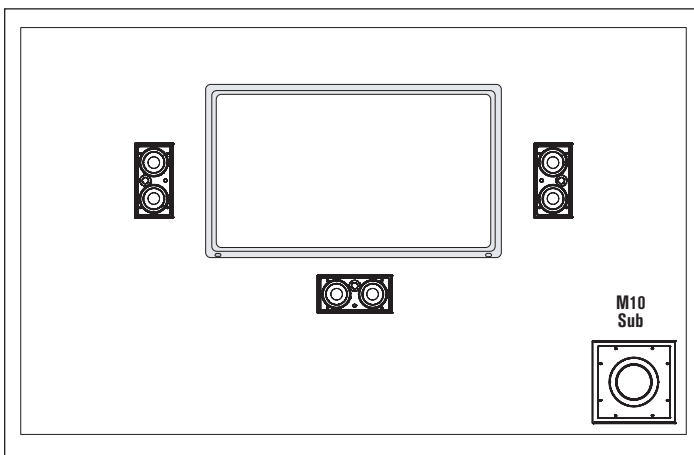
**Ceiling mounting is NOT recommended.**

#### Home Theater Placement

For highest output and best overall performance the M10 Sub should be located in the front corner of the room. Place the subwoofer as close as possible to the left, center and right speakers to assure seamless integration of the sound from the main speakers and the subwoofer.

**NOTE: THE SUBWOOFER SHOULD NOT BE MOUNTED IN THE SAME STUD BAY AS THE LEFT, CENTER OR RIGHT SPEAKER.**

Use the following illustration as a guide.

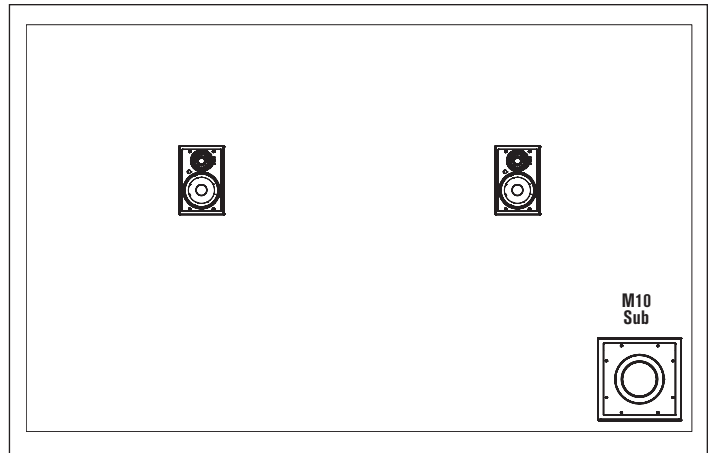


### Stereo Placement (2-Channel System)

In a 2-channel system the M10 Sub should be located in a corner of the room, as close as possible to the left or right speaker. Corner placement provides the highest output and best overall performance for the M10 Sub subwoofer.

**NOTE: THE SUBWOOFER SHOULD NOT BE MOUNTED IN THE SAME STUD BAY AS THE LEFT OR RIGHT SPEAKERS.**

Use the following illustration as a guide.



### INSTALLING THE SUBWOOFER

**Step 1.** Determine the location for the subwoofer (see *Subwoofer Placement*). Center the subwoofer between the wall studs. Tap the wall and listen for a "hollow" sound, or use a stud finder to locate studs.

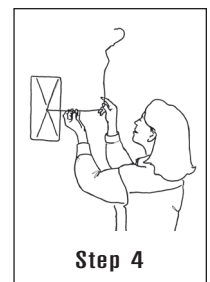
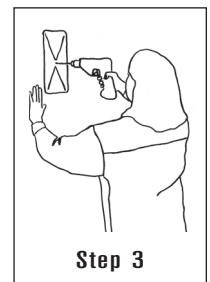
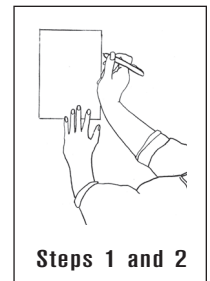
**Step 2.** Position the included cutout template where the subwoofer is to be located and trace the outline on the wall with a pencil.

**IMPORTANT: Be sure to center the template between the wall studs – the edges of the cutout outline must be at least 1" away from any studs, to allow room for the RotoLock® clamps to operate.**

**NOTE: READ STEP 6 ABOUT RUNNING SPEAKER WIRE BEFORE DECIDING ON THE FINAL LOCATION FOR THE SUBWOOFER.**

**Step 3.** Drill a small hole in the center of the outline you just traced.

**Step 4.** Insert a coat hanger wire into the hole to feel-around for possible obstructions. If there are obstructions, patch the hole and select another location for the speaker. Make sure that any studs will be at least 1" away from the edges of the cutout.



## MODERNO M10 SUB SUBWOOFER

**Step 5.** Carefully cut the outline of the mounting hole using a keyhole or drywall saw. Remove the drywall from the cutout.

**IMPORTANT: Make sure your amplifier's power is turned off before performing Step 6.**

**Step 6. A)** Run speaker cables from your amplifier's left and right main speaker outputs to the subwoofer location.

**B)** Run one speaker cable from the subwoofer location to the left main speaker, and another speaker cable from the subwoofer location to the right main speaker.

**C)** Pull the ends of all the cables through the subwoofer mounting hole. Mark each cable, such as "From Amp Left", and "To Right Main Spkr".

- Allow a few extra feet on each cable, and leave enough cable slack so you can strip the insulation from the conductors when you're ready to connect to the subwoofer.

Use high-quality cable such as HomeTech HTC100 16/4 cable.

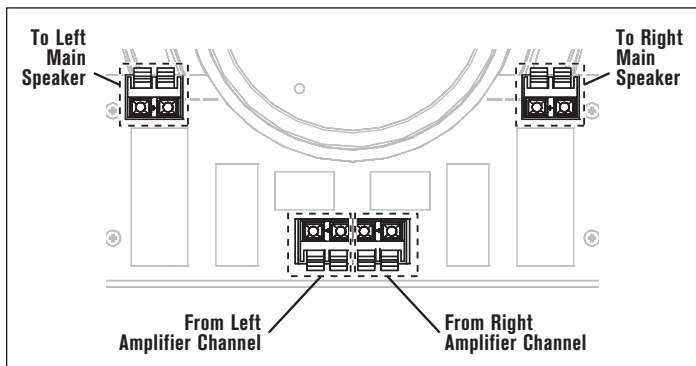
**NOTE: IF SPEAKER CABLE IS TO BE RUN THROUGH WALLS OR CEILINGS, THE CABLE MUST BE UL- AND CL-RATED FOR YOUR SAFETY AND BUILDING CODE COMPLIANCE.**

**Step 7.** Your subwoofer's performance can be enhanced by insulating the wall cavity with fiberglass insulation. When insulating speakers, it is best to use a sheet of unfaced fiberglass insulation behind and around the sides of the speaker.

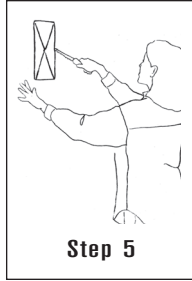
**Step 8.** Connect the cables from the amplifier and the cables from the main speakers to the subwoofer as shown in the illustration below. Connect the positive ("+") wires to the subwoofer's red terminals, and connect the negative ("-") wires to the subwoofer's black terminals.

The subwoofer's connectors are spring-loaded. Push the lever down to open the connector and insert the exposed wire into the hole. Double-check that all connections are correct.

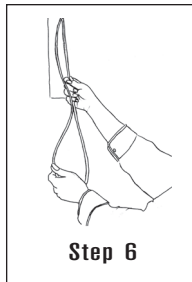
**Incorrect connections can damage your amplifier.**



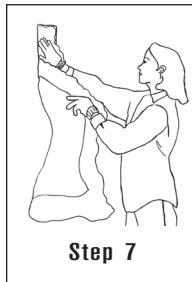
**IMPORTANT: Be sure not to let any stray '+' and '-' wires touch each other. Touching wires can cause a short-circuit that could damage your amplifier.**



Step 5



Step 6



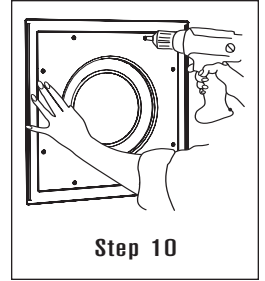
Step 7

**Step 9.** Make sure all the RotoLock clamps are in the full clockwise position so that they are tucked within the mounting hole's border. Insert the speaker into the mounting hole.

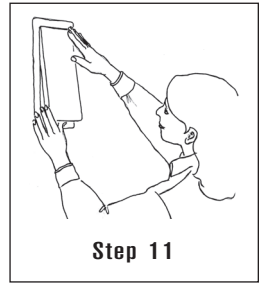
**Step 10.** Tighten the eight screws on the front of the speaker baffle evenly until the speaker is seated snugly and evenly against the wall.

**IMPORTANT: If you are using a drill or electric screwdriver to tighten the screws be sure use the lowest torque setting.**

**Step 11.** Install the grille by placing it into the speaker baffle. Powerful magnets on the grille and on the speaker baffle will hold the grille firmly on the speaker.



Step 10



Step 11

## IF YOU'RE USING THE M10 SUB IN A HOME THEATER SYSTEM

If you have connected the M10 Sub to a 5.1- or 7.1-channel home theater system, you must perform the following setup procedures in your surround receiver's or surround processor's Speaker Setup menu in order to send the bass frequencies to the M10 Sub:

1. Access your surround receiver/surround processor's Speaker Setup menu.
2. Set the subwoofer output to OFF.
3. If the Speaker Setup menu provides a setting for Left & Right Speaker Size, set the Left & Right speakers to LARGE. This will send the bass frequencies to the M10 Sub.
  - If there is no provision for setting the Left & Right Speaker Size, the bass frequencies will automatically be sent to the M10 Sub.
4. The Speaker Size settings for your system's other speakers should be made according to their manufacturer's recommendations.

## PAINTING THE GRILLES

Moderno grilles may be painted to color-match their surroundings. First, remove the grilles from the speakers then remove the scrim cloth that is attached to the backs of the grilles. (The adhesive that holds the cloth in place is reusable.) Paint the grilles with very thin paint (5 parts thinner to 1 part paint), being careful not to plug the holes. When the paint has fully dried, re-attach the scrim cloths to the backs of the grilles and re-install the grilles on the speakers.

## SPECIFICATIONS

### M10 Sub

Woofer:	10" (254mm) Woven glass fiber cone, dual voice coils, rubber surround
Frequency Response:	35Hz - 150Hz ±3dB
Impedance:	8 Ohms nominal
Power Handling:	150 Watts maximum
Sensitivity:	92dB SPL (2.83V 1 meter)
Grille Material:	Perforated metal
Dimensions (W x H x D):	14 3/4" x 14 3/4" x 3 7/8" (375mm x 375mm x 98mm)
Cutout Dim. (W x H):	12 3/4" x 12 3/4" (324mm x 324mm)
Shipping Weight:	10 lbs. (4.5kg) Each

## TECHNICAL ASSISTANCE

For answers to installation questions or an installation walk-through, please call our Technical Assistance Department on any business day at: (800) 582-7777, from 7am to 5pm, Pacific Time.

## OBTAINING SERVICE

If this product should need repair or service, contact your Authorized Moderno Dealer for help, or use the following procedure:

1. Prior to calling, note the product's model number, serial number, purchase date, and the name and address of the dealer where you purchased the product.
2. Contact our Technical Assistance Department at the above number and describe the problem the unit is experiencing. If applicable, they will issue a Return Authorization Number.

### **IMPORTANT: Do not return the unit to Moderno without first obtaining a Return Authorization Number!**

3. If you're directed to return the unit to Moderno for repair, pack the unit in its original shipping carton. If needed, you can obtain replacement packaging from us for a small charge. Note: it is best if you place the box into an additional outer "overcarton" before shipment to minimize a chance of theft in shipment. Please include a copy of the original bill of sale inside the package.
4. Contact a package delivery service such as United Parcel Service or Federal Express to arrange prepaid (not collect) shipping. *Do not use the U.S. Postal Service.*

### **IMPORTANT: Freight collect shipments will be refused.**

5. **Write the Return Authorization Number on the outside of the shipping carton.** For warranty work, please include a copy of the original bill of sale inside the package.
6. Ship the packaged unit to:

**Returns Department  
Moderno  
212 Avenida Fabricante  
San Clemente, CA 92672-7531**

## WARRANTY COVERAGE (USA ONLY)

If within five (5) years from the date shown on the bill of sale the product fails due to a defect in workmanship or material, Dana Innovations will, at its option and at no charge, repair or replace the components of the product which prove to be defective.

For this warranty to be effective, the bill of sale must show that the product was purchased from an "Authorized Moderno Dealer". This warranty shall apply exclusively to the original purchaser and shall not apply to products purchased for industrial or commercial use.

Furthermore, this warranty shall not apply if:

1. Damage to the unit was caused by accident, abuse or misuse;
2. The unit was opened, modified, or repaired by unauthorized personnel; or
3. The unit was not used as outlined in the instruction manual.

## EXCLUSIONS AND LIMITATIONS

The warranty set forth above is in lieu of all other warranties, express or implied, of merchantability, fitness for a particular purpose, or otherwise. The warranty is limited to Dana Innovations products registered herein and specifically excludes any damage to loudspeakers and other allied or associated equipment which may result for any reason from use with this product.

Dana Innovations shall, in no event, be liable for incidental or consequential damages arising from any breach of this warranty or otherwise. This warranty gives you specific legal rights, and you may have rights which vary from state to state.



©2007 Moderno. All rights reserved. Moderno and RotoLock are registered trademarks of Dana Innovations.  
Due to continuous product improvement, all features and specifications are subject to change without notice.  
For the latest Moderno product specification information visit our website: [www.modernoaudio.com](http://www.modernoaudio.com)  
MODERNO • 212 Avenida Fabricante • San Clemente, CA 92672-7531 USA • (800) 582-7777

**[www.modernoaudio.com](http://www.modernoaudio.com)**